



Club**RUBI**[®]
ADVISE

Great format tiles do, generally, weigh more than normal tiles and, therefore, it is important to take some personal precautions. The use of a lumbar protector and knee pads will reduce tiredness and lower the risk of physical damage.

With the TX range of manual tile cutters we can cut formats larger than 90 cm (100, 110 or 120 cm.), with the same ease that we would smaller ceramic tiles and without the need to resort to using electric tile cutters which is always slower and sometimes more expensive.

When laying down large format tiles, it is more difficult to reach all the tiles to correct levelling. In these cases, the rubber mallets with long handle will allow the user to reach easily those more remote areas (including those tiles already laid down) in order to retouch or verify their position and levelling.



RELATED
PRODUCTS



RUBBER MALLETS WITH LONG HANDLE
Refs. 66920/21/22 & 66930/31/32



TX-1200-N



SPOMATIC-250



VULKOLAN SPATULA
Refs. 60951 & 60971



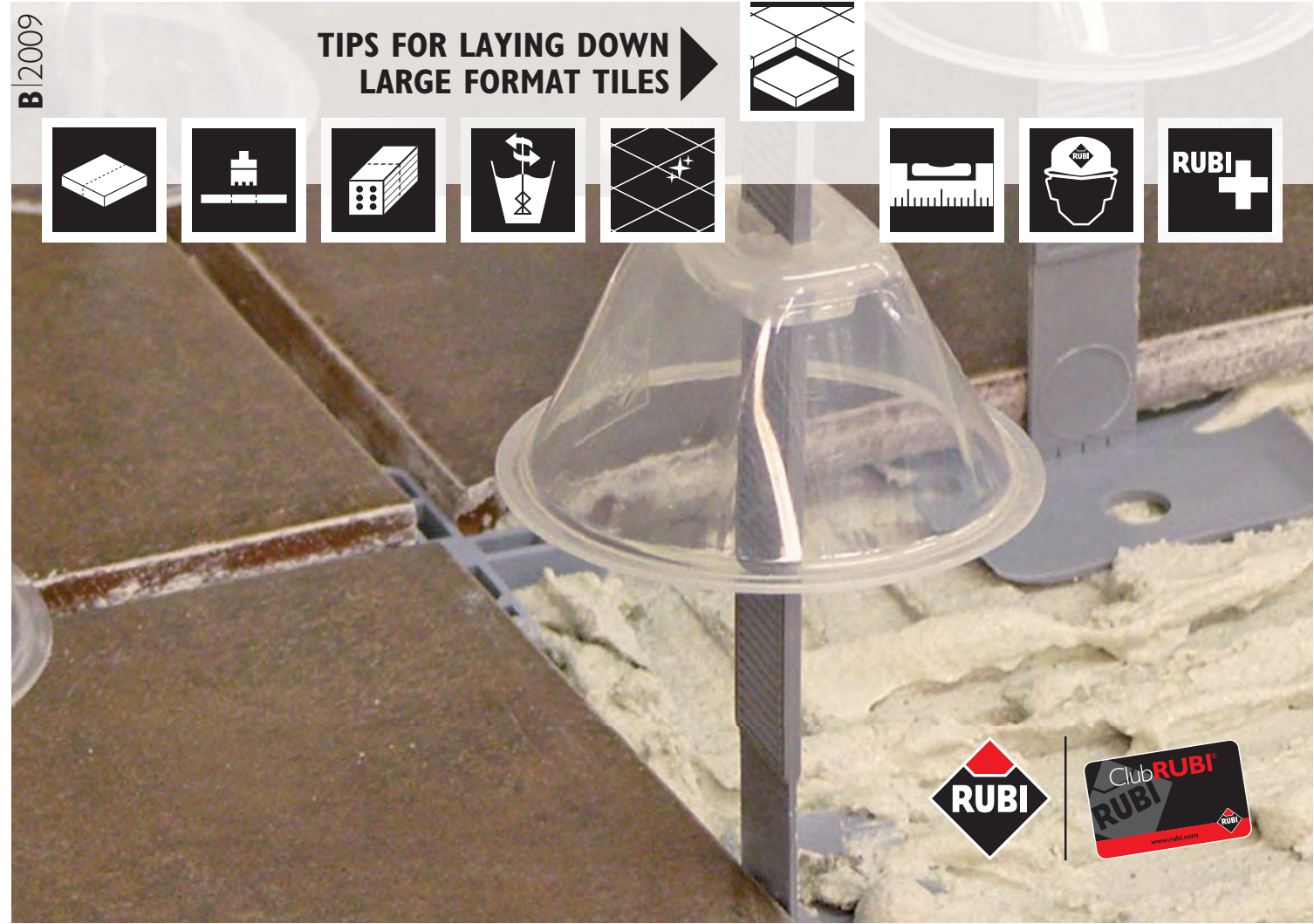
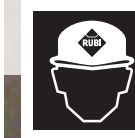
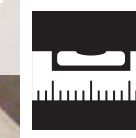
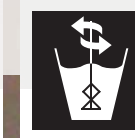
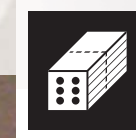
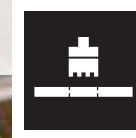
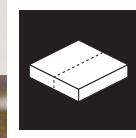
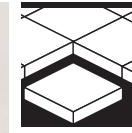
RUBILIM-40/50 NS Y NDS



www.rubi.com

B | 2009

TIPS FOR LAYING DOWN
LARGE FORMAT TILES



Over the last few years, we have seen a significant increase in the use of large format tiles and, nowadays, their use is quite widespread. This has made us realise that there is a real need to adapt the techniques and the tools used when laying down tiles to make the job of the building professionals a little bit easier.

In this collectable we aim to answer all the questions that we have received from our many Club Rubi members, and to provide guidance about how to best deal with this type of tile.



NOTCHED TROWELS 48 cm.

Adapter for trowels and notched trowels (Ref. 70923). Steel notched trowels with a closed wooden handle and an adapter that enables the user to cover larger surfaces quicker and with less effort.



DOUBLE & TRIPLE SUCTION PADS

(Ref. 66900 y 66904). Body made of highly resistant aluminium with an ergonomic handle for greater comfort. Maximum load capacity: up to 80 Kg. and 100 Kg. respectively.



TILE SPACERS & "T"-SHAPED SPACERS.

Are essential to obtain perfect finishes when laying down the tiles.



TILE LEVEL

(Ref. 02980/81). Quick levelling system specially indicated for laying down large format tiles.

Support and application of adhesive mortar: When laying down large format tiles, the base support must be a completely flat surface, because these materials must be laid down by using the "fine layer" technique (on occasions the "medium layer" technique). For this reason, it is necessary to use a notched trowel when applying the adhesive material. Normally, it is recommended to apply a double layer of adhesive mortar, however, if the tiles are going to be placed on walls the application of a double layer of mortar is essential.

Manipulation: Manipulation of tiles of great format is substantially improved by using DOUBLE or TRIPLE suction pads. Thanks to these tools, rectifying the position of the tile or checking the adhesiveness of the adhesive mortar is made a lot easier.

Alignment and joints: With the exception of rectified tiles, large format tiles normally present small dimensional variations however this can easily be corrected by using spacers and "T"-shaped spacers in the joints.

Levelling: Due to the large surface covered by each tile, the lack of level between tiles is a habitual problem when laying down this type of tile. In order to make this task easier RUBI manufactures the RUBI Tile Level, a new and quick levelling system, designed exclusively to be used when laying down large format tiles. The RUBI Tile Level allows the user to improve the levelling of the surface, avoid the movement of the tiles during hardening and make the process much quicker.



Because we are dealing with large format tiles, in some cases we will have to cover large areas with adhesive cement. The use of a 48 cm notched trowel together with an adapter will make it easier for the user to distribute the adhesive cement without being in uncomfortable positions. A longer handle can be fitted to the adapter which will allow the user to work standing up and demand less effort.(PHOTO A).

The Rubi spacers and "T"-shaped spacers allow the user to obtain excellent, highly precise finishes thanks to the regularity of their proportions, the homogeneity of their measures and the absence of seams and small defects. (PHOTO B)

We will place 2 bridles at each side of the tiles (3 or more depending on the format) and, once the tiles have been laid down, we will tighten the bell to apply pressure to the tile, levelling the position of the surface of both tiles (PHOTO C)

