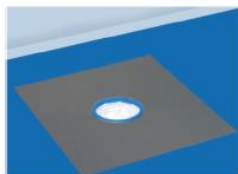
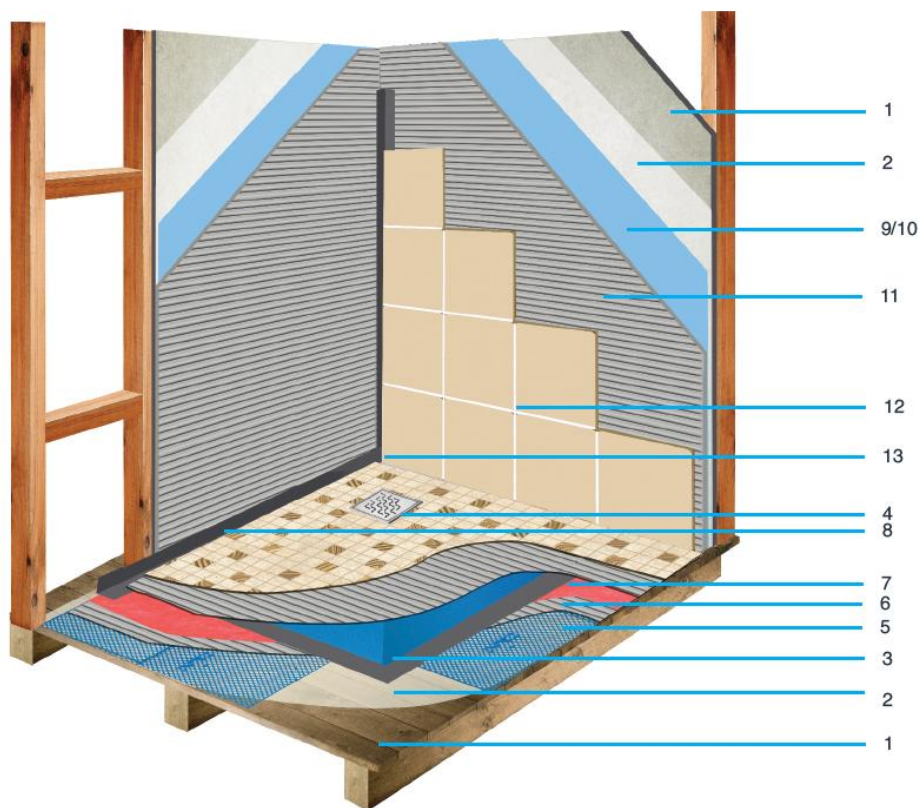


Wet Room Waterproof Tanking System for Stud Walls and Timber Floors



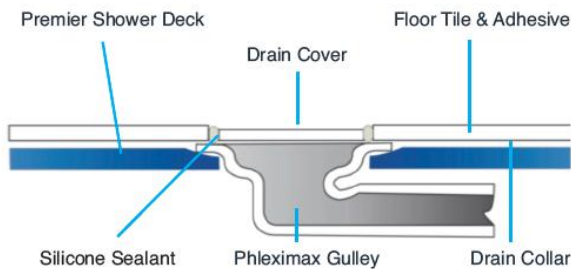
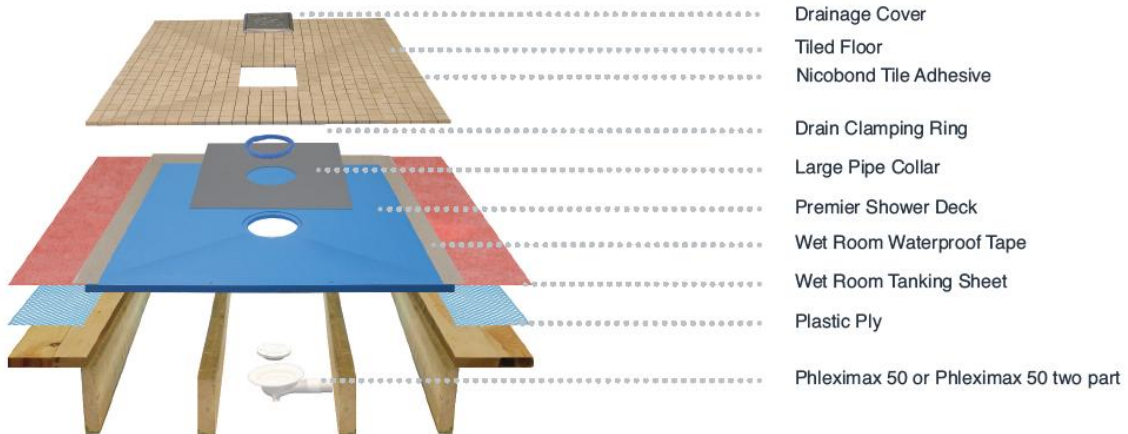
4. Large Collar to seal joint between the drain and the Premier Shower Deck.

1. Screw plasterboard to stud frame wall construction at maximum 600mm centres. Ensure surfaces are dust free and clean.
2. If wall surfaces are porous and for timber floors prime with Nicobond Universal Bonding Agent & Sealer.
3. Cut out the timber floor for the Premier Shower Deck and make connections for drainage.
4. Use self adhesive Nicobond Wet Room Waterproof Large Collar to seal joint between the drain and the Premier Shower Deck.
5. Place the Plastic Ply into position on the floor, removing the backing sheet for self adhesive fixing.
6. Spread a thin, even layer of tile adhesive over the Plastic Ply to provide a flat surface
7. Lay the Nicobond Wet Room Waterproof Tanking Sheet. This will waterproof all sections of the timber floor. Use the Nicobond Wet Room Waterproof Tape to seal the joints.
8. Start with internal corners, wall and floor junctions, joint between Premier Shower Deck and Tanking Sheet, install the self adhesive components, these can be overcoated with Nicobond Wet Room Waterproof Membrane as described below.
9. Using a medium roller apply the first coat of Nicobond Wet Room Waterproofing Membrane to wall and floor. It is not necessary to coat the Premier Shower Deck (only around the drain collar) as it is waterproof. Allow to dry.
10. Apply the second coat of membrane over walls, floors and wet room components to ensure a good seal is achieved. The optimum thickness of the membrane to be minimum 0.6mm for the two coats. Allow to dry for at least 2 hours before commencing tiling.
11. Apply a layer of the recommended adhesive and press tiles with slight sliding or twisting action.
12. Fill joints between tiles using the recommended grout.
13. Insert movement and perimeter joints to internal corners and at wall and floor junctions.

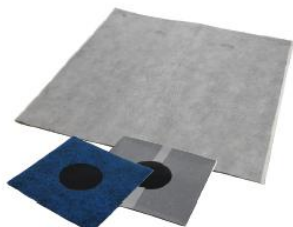
* Timber is not considered to be a suitable base for floor tiling in wet, frequently damp, or high humidity areas, unless appropriate precautions are taken (BS 5385-4).

Noggins might be required between joists in order to achieve the required rigidity. The limit of deflection normally permitted for domestic timber floors (see BS 5268-2) might be too great to avoid damage to tiling systems.

* The use of sheets and boards that are subject to movement from changes in moisture content e.g. wood-based materials such as plywood, chipboard, wood particle boards etc. should be avoided if at all possible. Failure to observe recommendations as to treatment of boards can lead to subsequent warping and distortion of the boards with consequent cracking and delamination of the tiling. In situations where tiles may be subject to high pressure water jet ie: from power showers it is recommended to fill joints using Nicobond Starlike Extreme Performance Grout.



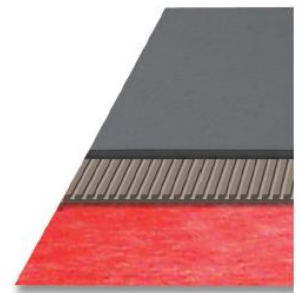
Nicobond Wet Room Waterproofing Membrane



Nicobond Wet Room Waterproofing Pipe Collars (self adhesive)



Nicobond Wet Room Waterproofing Corners and Tape (self adhesive)



Nicobond Wet Room Tanking Sheet

Recommended Tile Adhesives

Recommended Tile Grout

Featured Product



Nicobond Rapidflex



Nicobond Large Format Floor Tile Adhesive



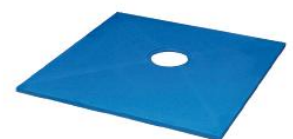
Nicobond Xtra



Nicobond Flexible Grout Plus

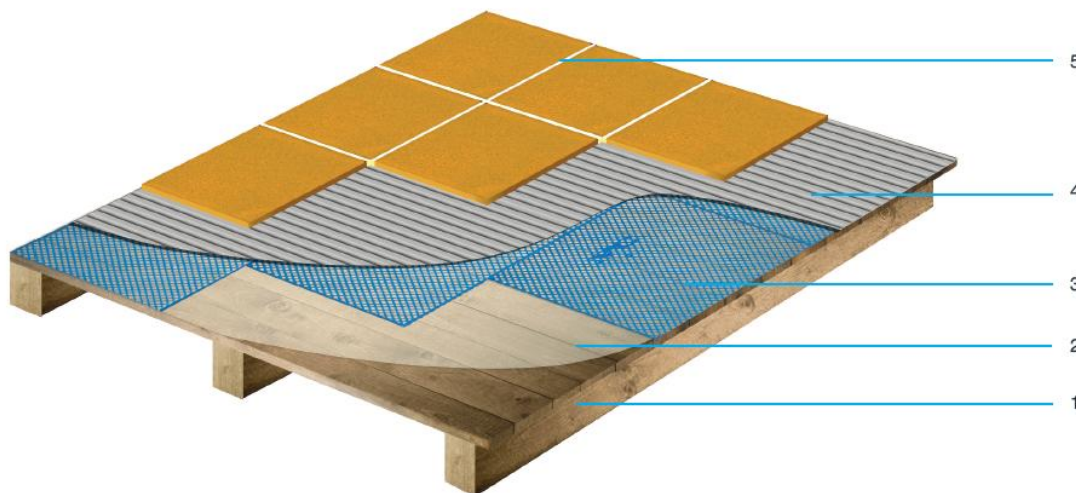


Nicobond Starlike Extreme Performance Grout



Nicobond Premier Shower Deck

Tiling onto Timber Floors using a Timber Reinforcing Sheet



1. Ensure that the timber floorboards or chipboard/plywood is screwed down at a maximum of 300mm centres.
2. Prime the timber surfaces with diluted Nicobond Universal Bonding Agent & Sealer and allow to dry.
3. To reduce deflection and increase stability, overlay the timber floor with Nicobond Plastic Ply in a brick like formation. Remove the backing sheet for self adhesive fixing.
4. Solidly bed tiles into recommended adhesive 3-6mm deep using slight sliding action. Allow to dry to recommended time.
5. Fill joints between tiles using the recommended grout.

* Timber is not considered to be a suitable base for floor tiling in wet, frequently damp, or high humidity areas, unless appropriate precautions are taken (BS 5385-4). Noggins might be required between joists in order to achieve the required rigidity. The limit of deflection normally permitted for domestic timber floors (see BS 5268-2) might be too great to avoid damage to tiling systems.

* Nicobond Plastic Ply is not a suitable remedy for direct tiling to floating floors, these require additional strengthening through overboarding, seek technical advice.

Recommended Tile Adhesives



Nicobond
Rapidflex



Nicobond
Large Format
Floor Tile Adhesive



Nicobond
Single Part Flexible
Adhesive

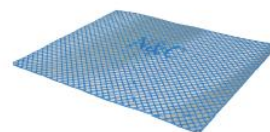


Nicobond
Flexible Grout Plus



Nicobond
Starlike Extreme
Performance Grout

Featured Product



Nicobond
Plastic Ply

Alternative Adhesives:

Nicobond Xtra/Enhancer 2002
Nicobond Fast Wall and Floor Adhesive/Enhancer 2002
Nicobond Ecoflex

Alternative Grouts:

Nicobond Tilers Grout/Enhancer 2002

Other Featured Products

Universal Bonding Agent and
Sealer